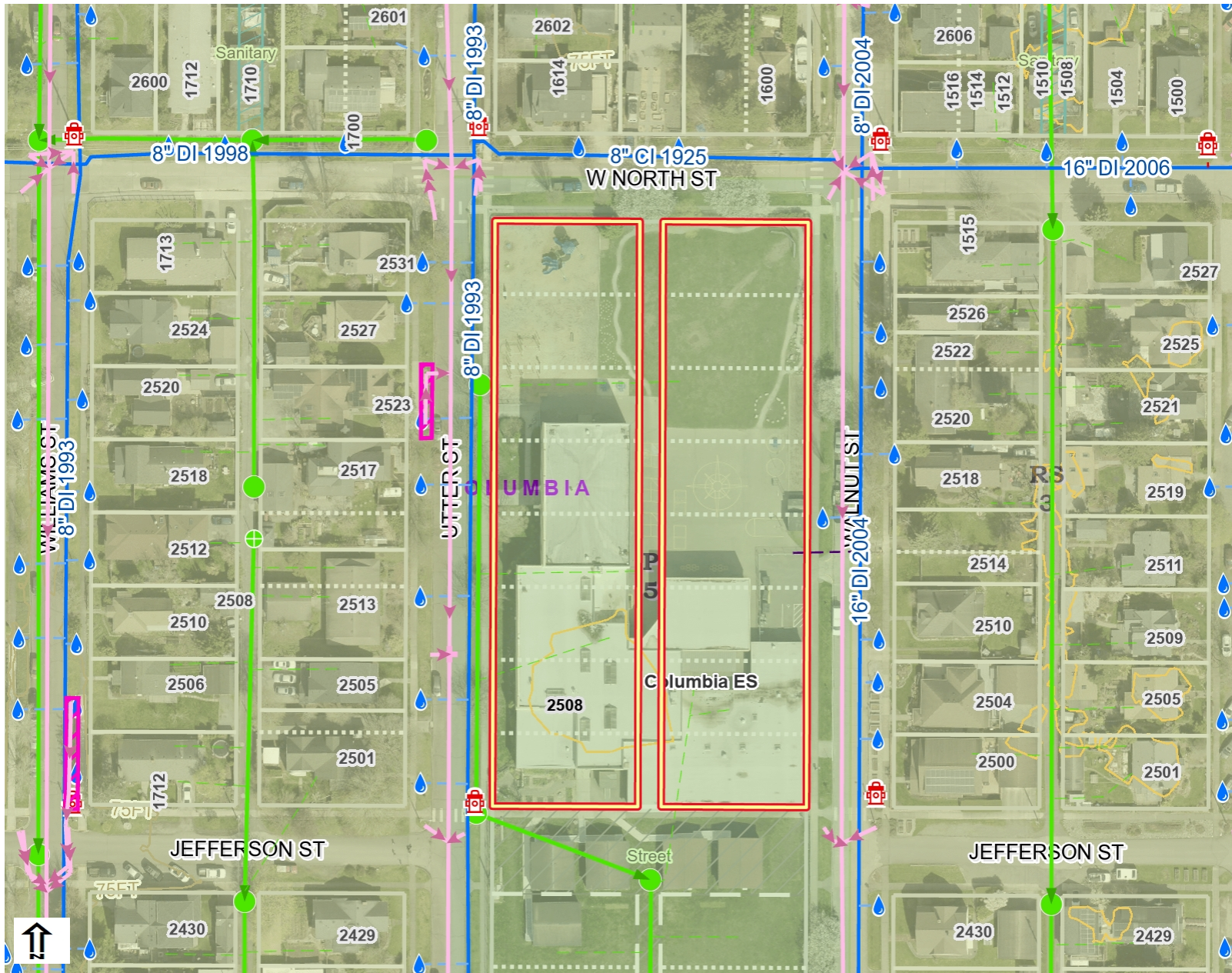
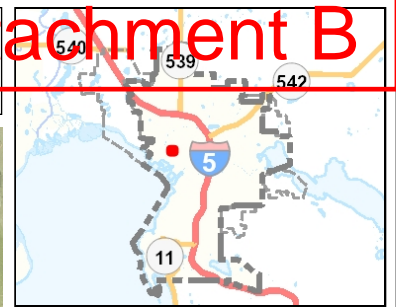


Columbia Elementary Alley Vacation



Legend

- Construction Active
- City Capital Project
- Private Development
- City and UGA
- City Boundary
- Urban Growth Area
- Schools
- Catch Basins
- Manhole
- Clean Out
- Pipe End
- Fitting
- Lateral Lines
- Collector
- Domestic
- Drain
- Culvert
- Storm Main
- City Mains, Active
- City Mains, Under Construction
- Private Mains, Active
- Private Mains, Under Construction
- Ditch
- Storm Access Points
- Access Cover
- Observation Well
- Storm Control Structures
- Storm Other Components
- COB - Public Works
- Open Channel Streams
- Water Access Points
- Service Valve
- Fireline Valve
- Hydrant Valve
- Fitting
- Control Valve
- Air Release

Notes

Printed: 6/23/2023 9:35:10 AM

Columbia Neighborhood Area 5, Public Zoning with a School Use Qualifier

THIS MAP IS NOT TO BE USED FOR NAVIGATION

The City of Bellingham has compiled this information for its own use and is not responsible for any use of this information by others. The information found herein is provided simply as a courtesy to the public and is not intended for any third party use in any official, professional or other authoritative capacity. Persons using this information do so at their own risk and by such use agree to defend, indemnify and hold harmless the City of Bellingham as to any claims, damages, liability, losses or suits arising out of such use. Contact the Whatcom County Assessors office (360-778-5050) for the most up to date parcel information.